

Anti-Poverty &  
Inequality Committee  
Visit

28<sup>th</sup> August 2024



*Cairncry Community Centre Association*



*Cairncry Community Centre Association*

Joanne  
Currie

Chairperson



*Cairncry Community Centre Association*

Sarah  
Beattie

Centre Manager



*Cairncry Community Centre Association*

Craig  
Morrice

Community Support Worker

# Programme

12:30pm – Arrival

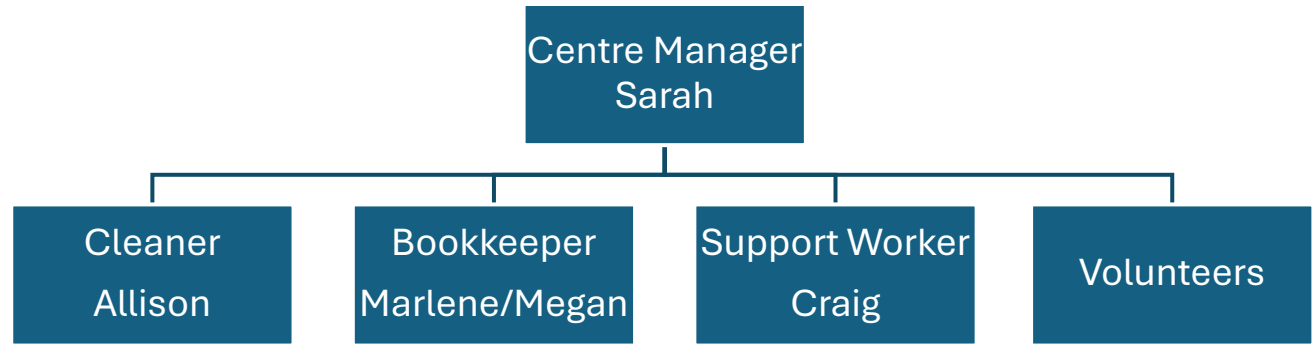
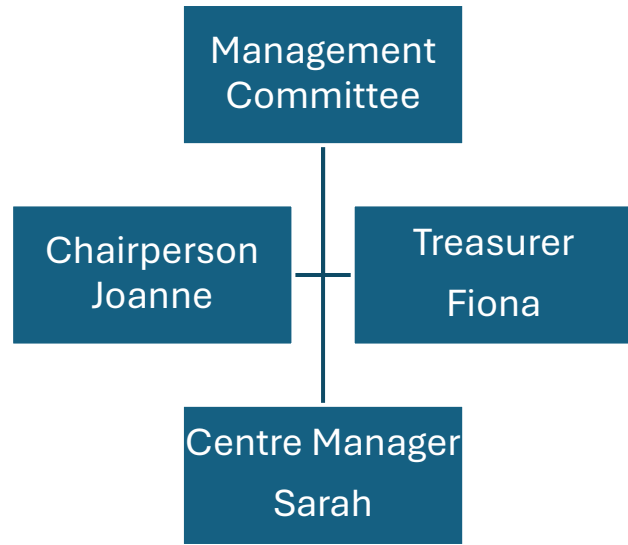
12:35pm – Lunch & talks with centre users & volunteers.

1:00pm – Presentation with Centre Staff

2:00pm – Close



# The Team

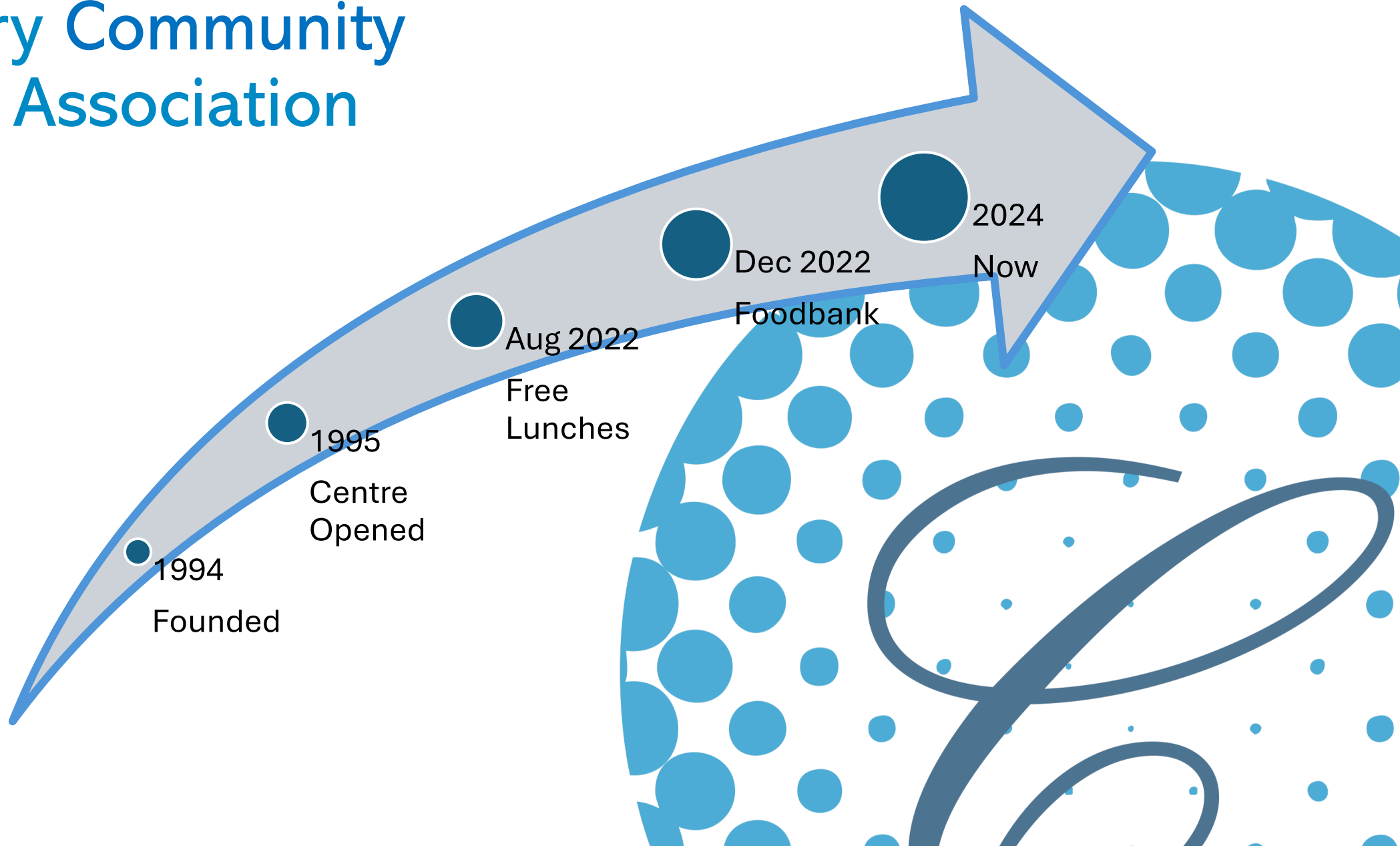




# Our Partners



# Cairncry Community Centre Association

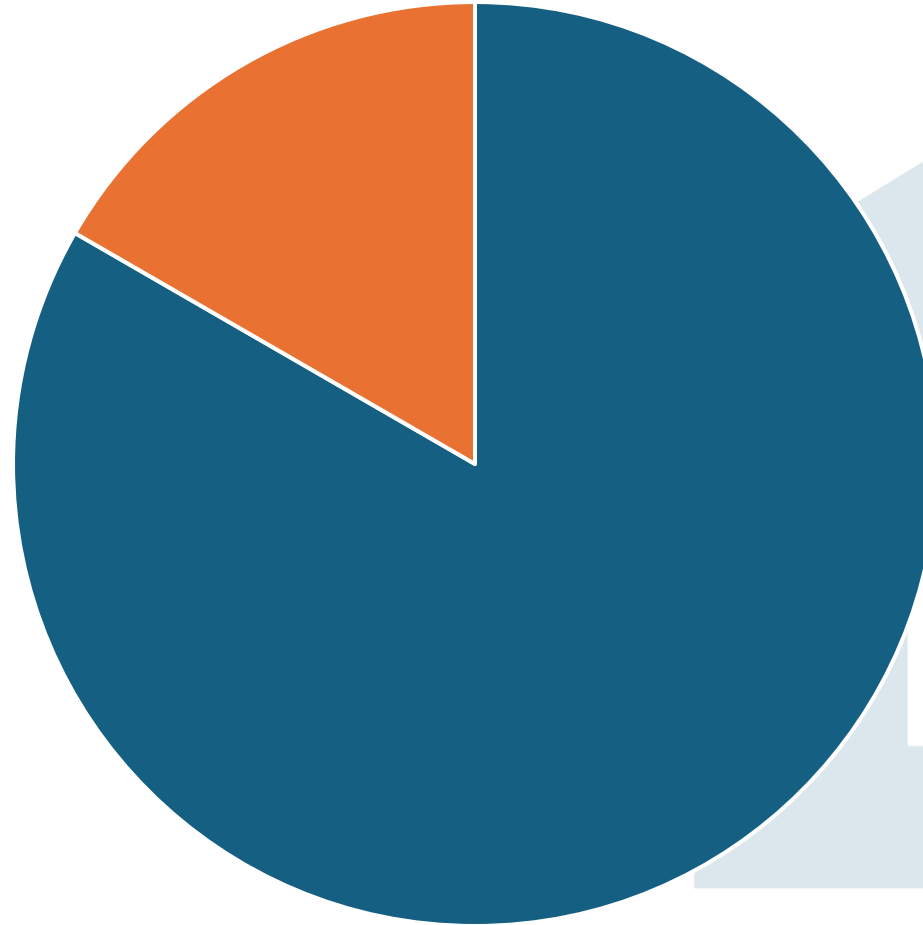






# Finance

Current Account



■ Allocated ■ Unallocated



Food  
Bank

Cafe

Cooking  
Classes

Youth  
Club

# ACTIVITIES

Parents  
&  
Toddlers

Exercise

Bingo

Bowls

# Food Bank

- Supported by CFine & centre volunteers
- Not means tested
- Open Monday, Tuesday & Friday
- Support for people in crisis
- Operated by volunteers

Lorraine



# Youth Club Parents & Toddlers

- Provision for young people P1 – P7
- New parents & early years
- Financially accessible
- Snacks
- Social Engagement
- Education



“Working in the kitchen has given me confidence to deliver a 10 week training course after using the service myself 28 years ago”



## Triple C Cafe

- Runs Monday, Tuesday & Friday
- Breakfast & Lunch
- Socialisation
- Demographic
- Run by our volunteer kitchen team
- Kitchen refurbishment

# Cooking Classes

- Teaches life skills
- Qualifications
- Nutritional cooking on budget
- Food bank
- Run by volunteers
- Abz Work
- Family course

“I have really enjoyed the cooking & have more confidence to cook at home”



# Exercise, Bingo, Bowls

- Provides a safe environment
- Intergenerational relationships
- Wider community engagement
- Access to foodbank, donations
- Health & Wellbeing





*Cairncry Community Centre Association*